



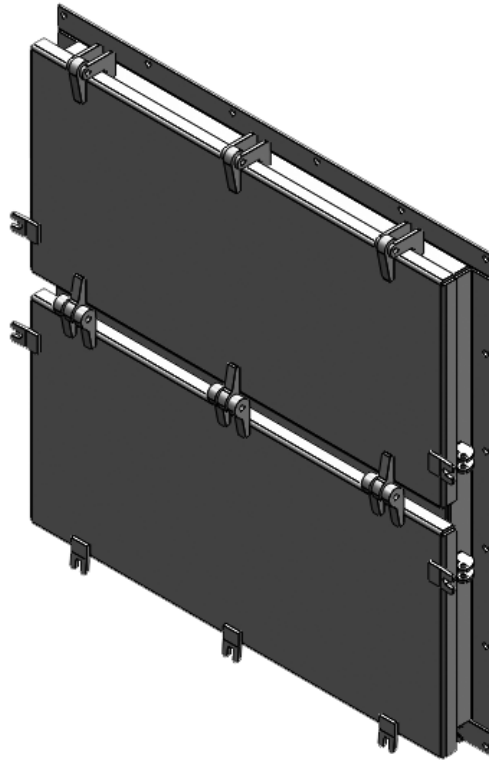
AERON



PC-22
Weather Louvres

INDEX

Weather Louvers	01
SSVent	03
SSVent - Rectangular.....	04
SR B x H F1	06
SR B x H.....	08
SRL B x H F	09
SRL B x H G.....	10



APPLICATIONS

Heavy-duty weather louvers are designed for marine applications.

SR - F

Rectangular, Single Bank Weather Louver, horizontally bladed, for mounting on Bulkhead. Either inside or outside mounting. Available in different sizes.

SRL - F

Rectangular, Single Bank Weather Louver for mounting on Bulkhead. Either inside or outside mounting. The louver is equipped with a hinged hatch with neoprene gasket and lock bolts with eye locking nuts. Top-, bottom- or side hinged. Available in different sizes.

SSVENT

Rectangular, Parallel Blade Damper for mounting on Bulkhead. Can be used for air volume control or as a shut-off damper. Damper blades and shafts in AISI 316L. The SSVent -FS model is also equipped with a fixed, single louver in front. Manual or automatic operated, pneumatic or electric controlled. Available in different sizes.

DESIGN

Long experience has contributed to a simple and functional construction. Also tailor made solutions to meet customer's specification.

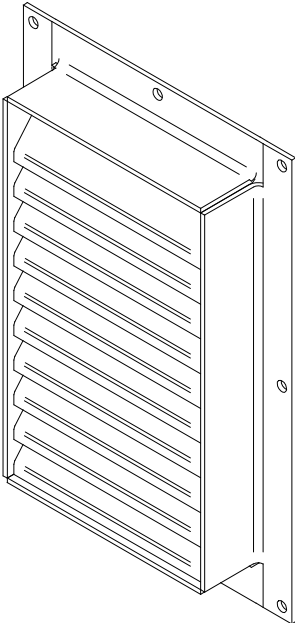
EXECUTION

Normally manufactured in Grade A ship steel, hot dip galvanized. Other materials are seawater resistant aluminium or stainless steel.

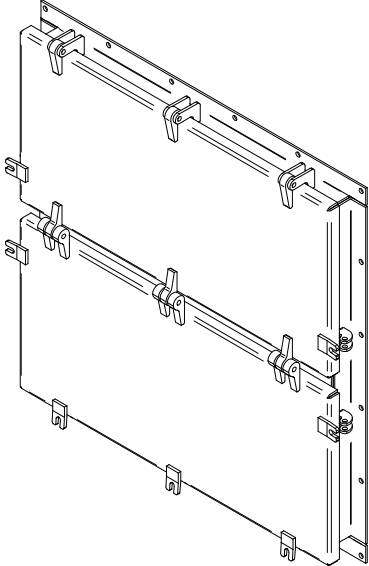
WEATHER LOUVRES



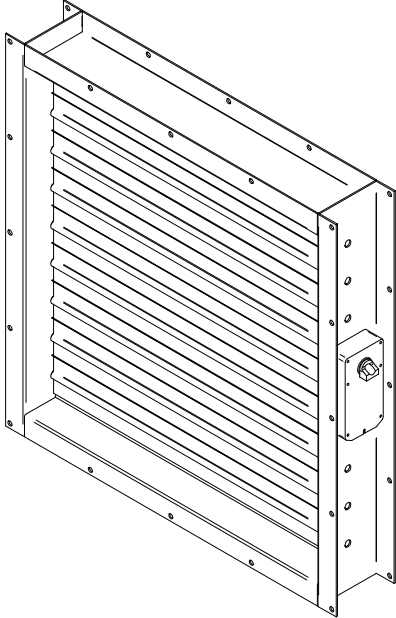
SR - F



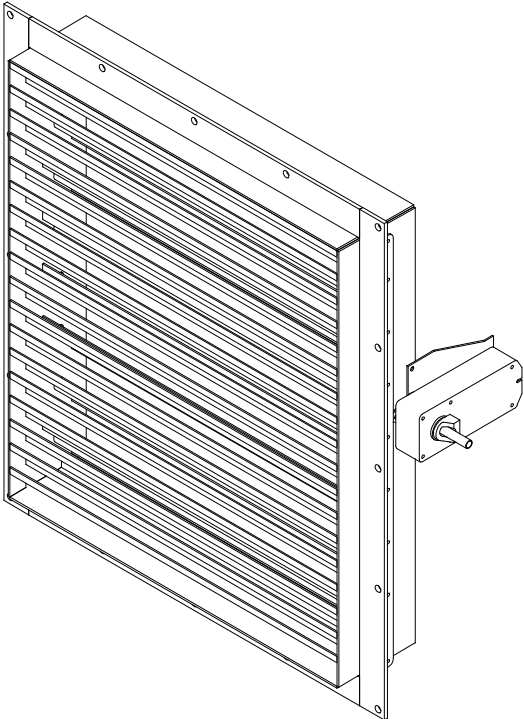
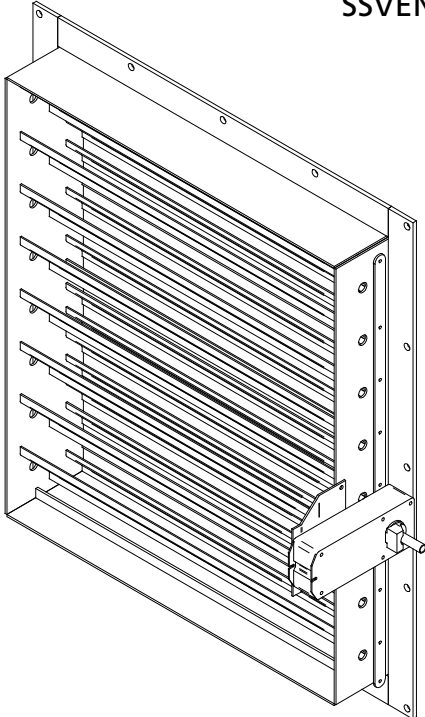
SRL - F

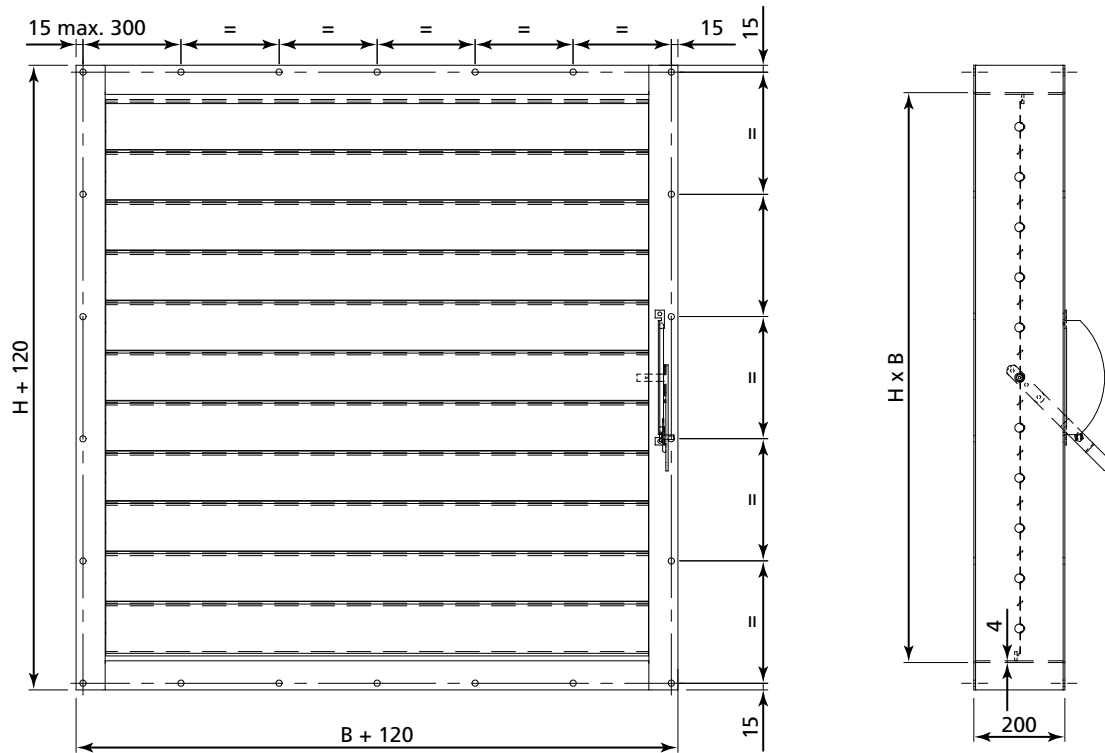


SSVENT



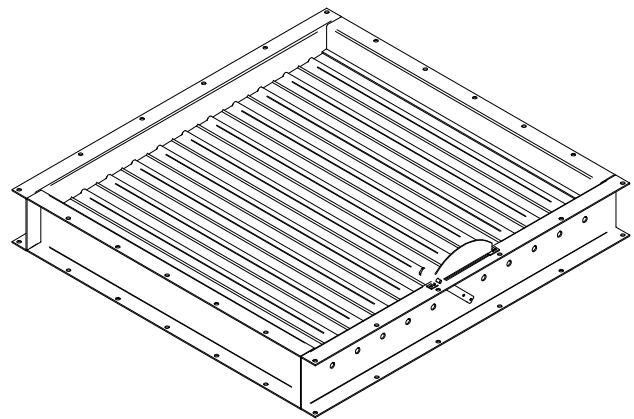
SSVENT - FS



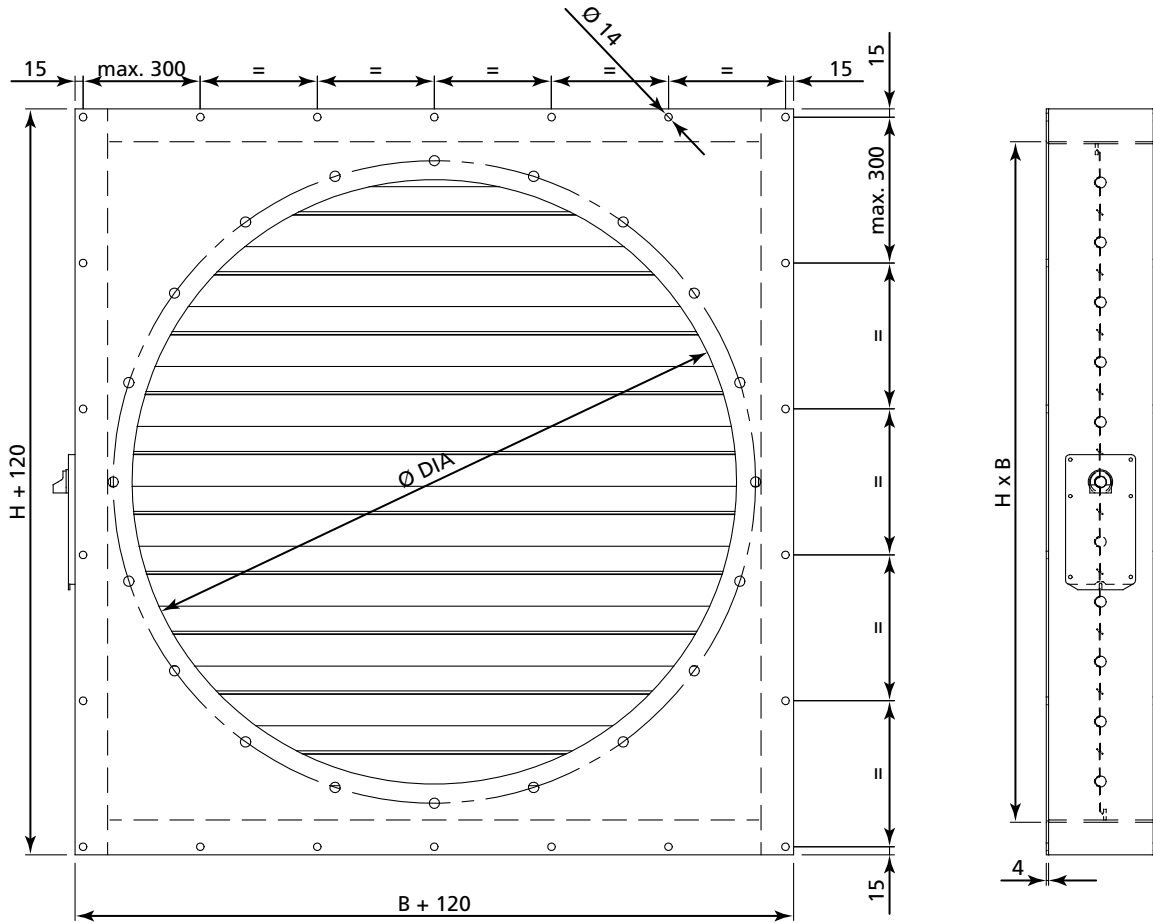


SHUTABLE BLADE DAMPER :
 SSVent BxH, made of hot dipped galv. Steel.
 Damper blades and shafts in AISI 316L.
 Can also be equipped with electrical or pneumatical actuators

H	H
260	1470
370	1580
480	1690
590	1800
700	1910
810	2020
920	2130
1030	2240
1140	2350
1250	2460
1360	2570

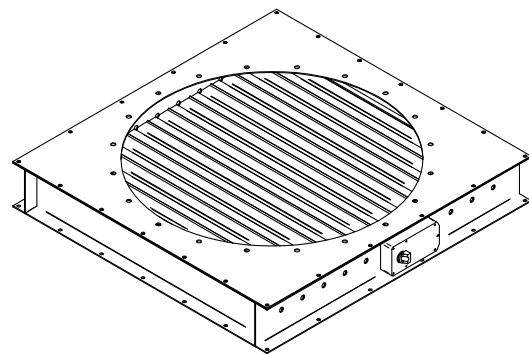


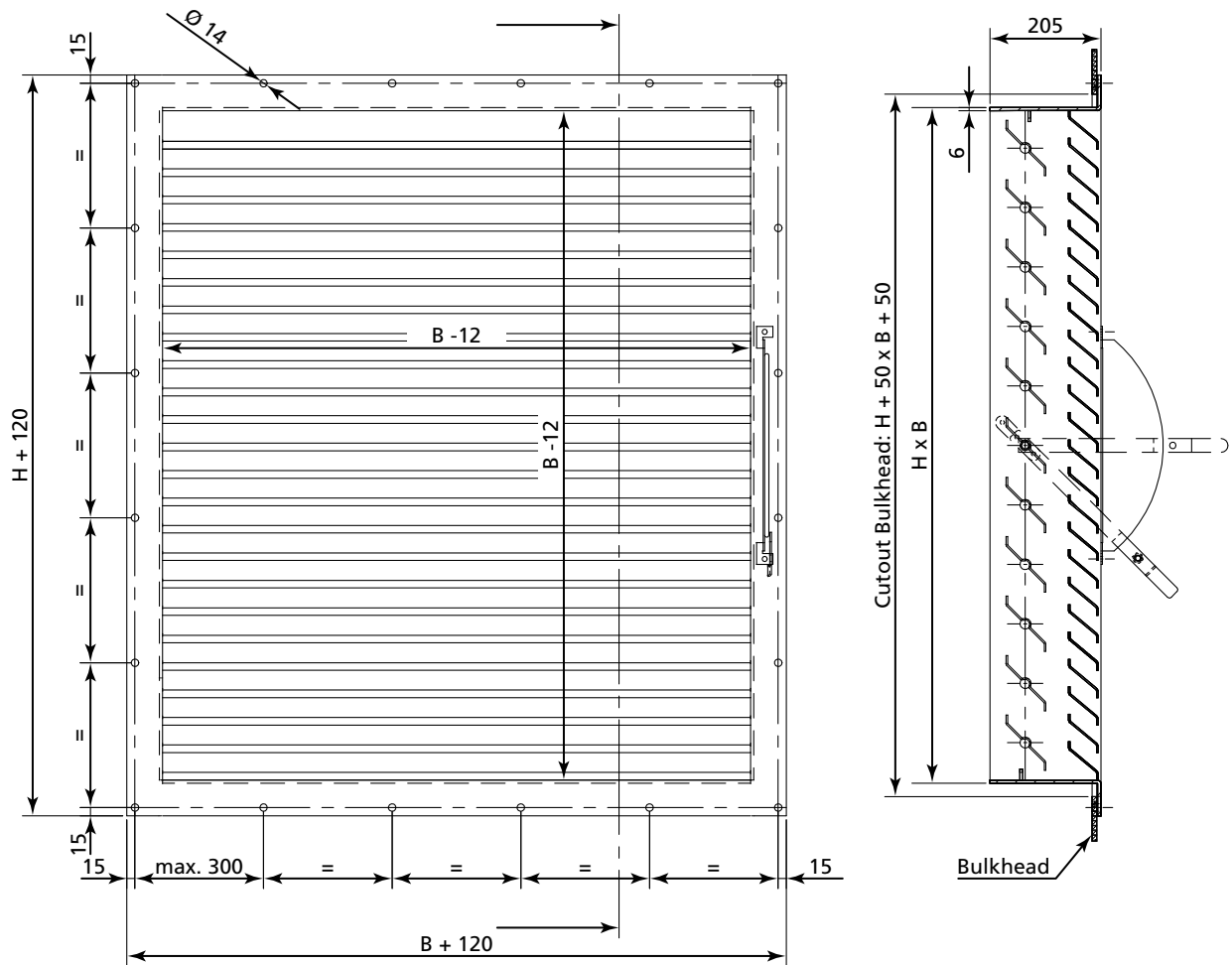
SSVENT - RECTANGULAR



RECTANGULAR SHUT-OFF DAMPER, DESIGNED FOR CIRCULAR APPLICATION, SSVent BxH, made of hot dipped galv. Steel. Damper blades and shafts in AISI 316L. Adapterplate is made of hot dipped galv. steel. Equipped with electrical or pneumatical actuators.

DIA	H	B
710	810	
800	920	
900	1030	
1000	1140	
1120	1250	
1250	1360	
1400	1580	
1600	1800	

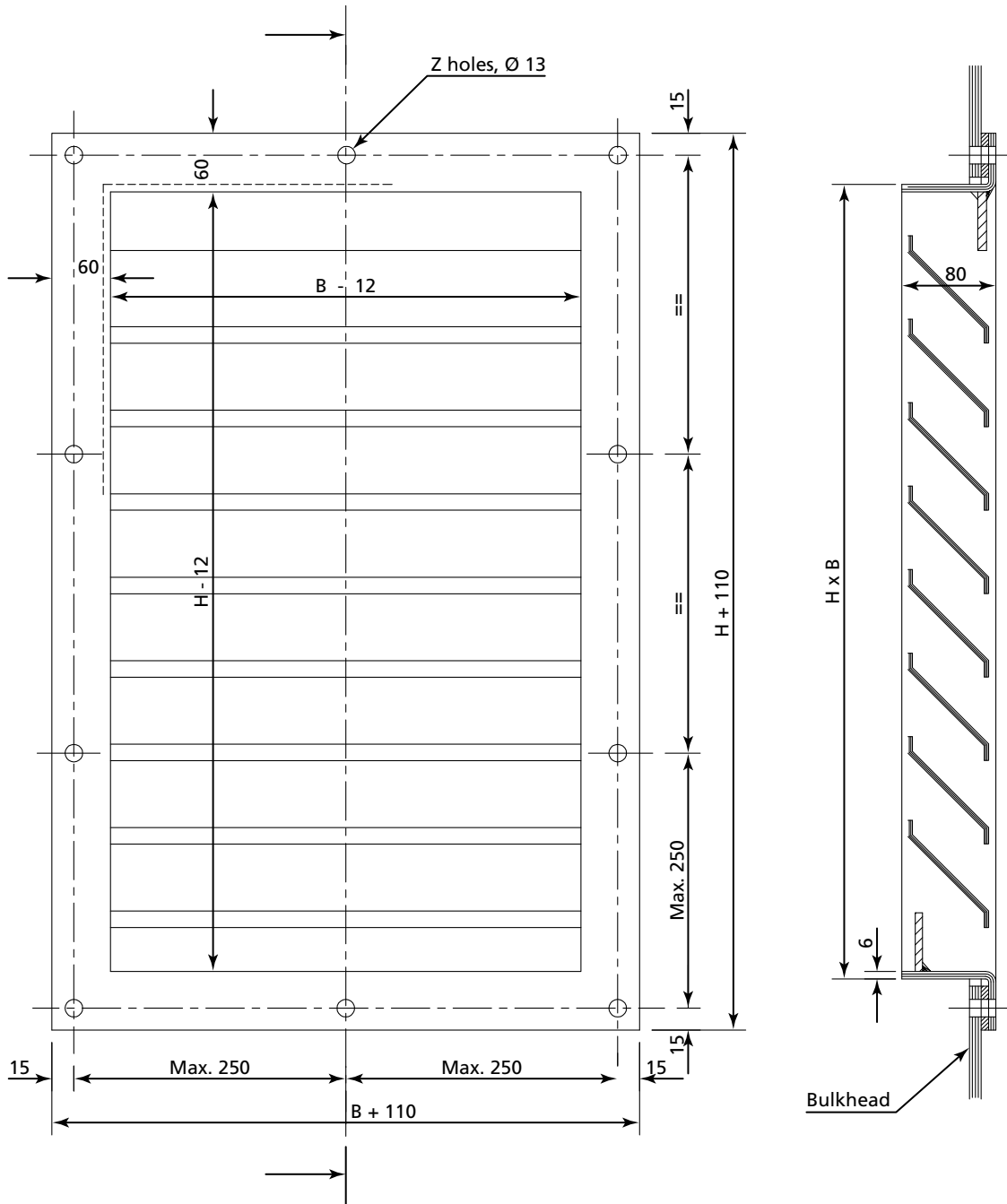


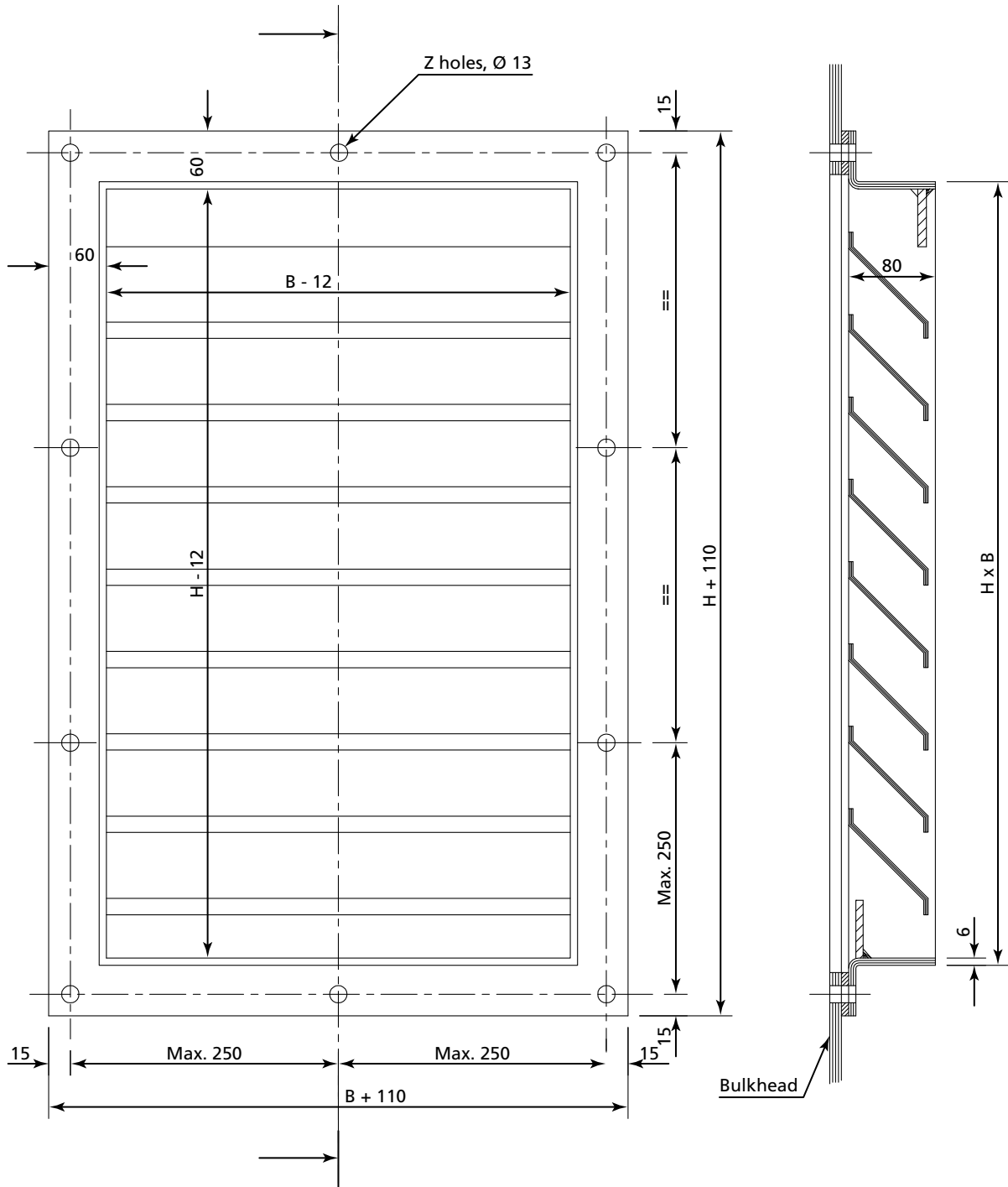


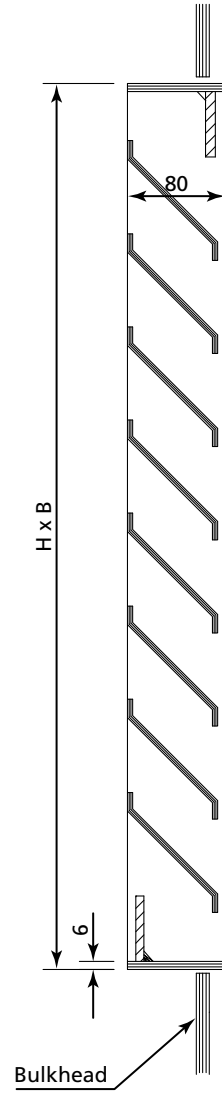
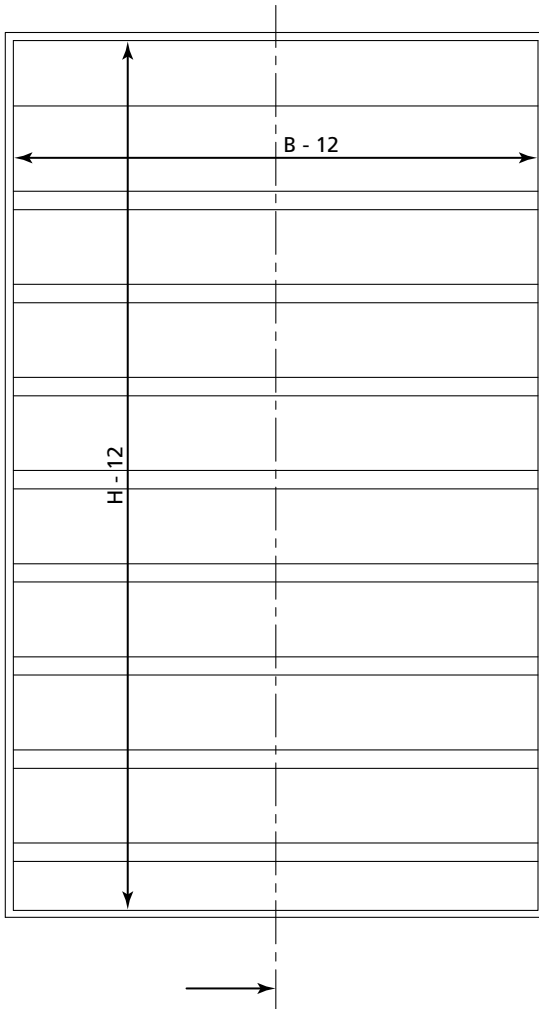
BLADE DAMPER

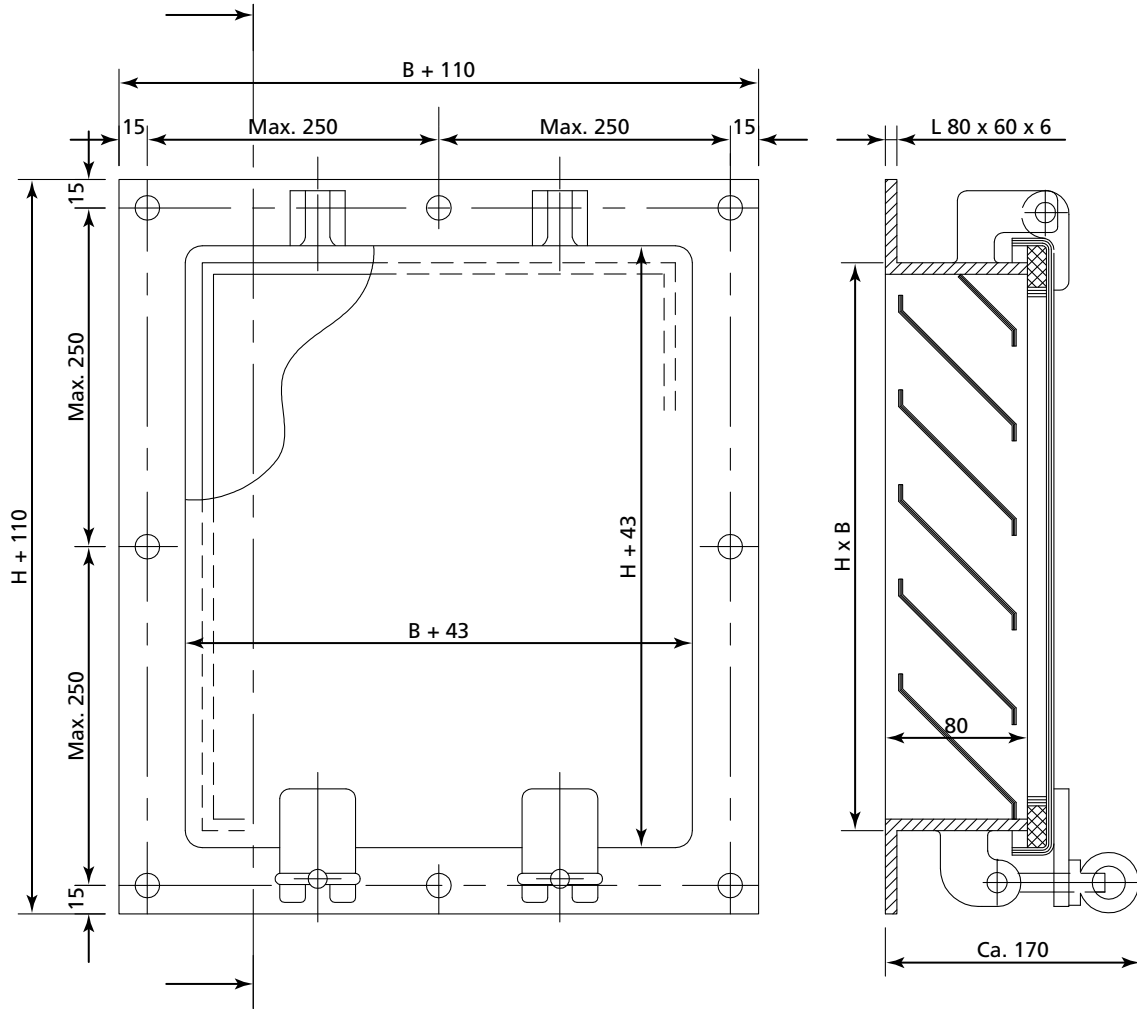
SSVent B x H FS , made of hot dipped galv.
St.37. Damper blades and shafts in AISI 316L.

H	B	H	B
260		1470	
370		1580	
480		1690	
590		1800	
700		1910	
810		2020	
920		2130	
1030		2240	
1140		2350	
1250		2460	
1360		2570	





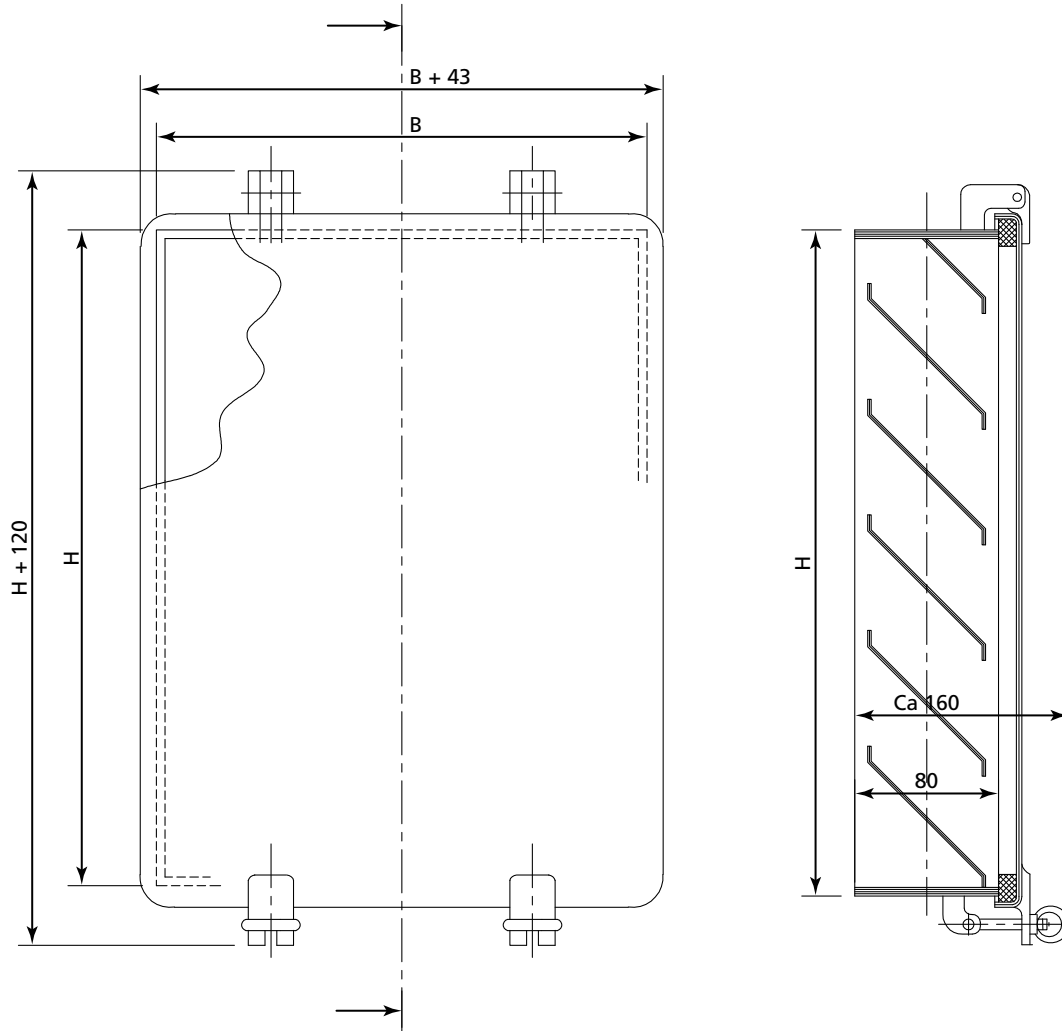




WEATHER LOUVRE, C/W HINGED COVER

- Hot Dipped Galv., or Aluminium Alloy
- Sea Spray Protectet Blades
- Heavy Duty Neoprene Gasget
- Hinges and Screw Joint in Stainless Design
- Top- or Sidehinged Cover
- B x H, Measurement for Cutting Torch on Bulkhead

B	H



WEATHER LOUVRE, C/W HINGED COVER

- Hot Dipped Galvanized
- Sea Spray Protected Blades
- Heavy Duty Neoprene Gasket
- Hinges and Screw Joints in Stainless Design
- Top- or Sidehinged Cover
- B x H, Measurement for Cutting Torch on Bulkhead

B	H